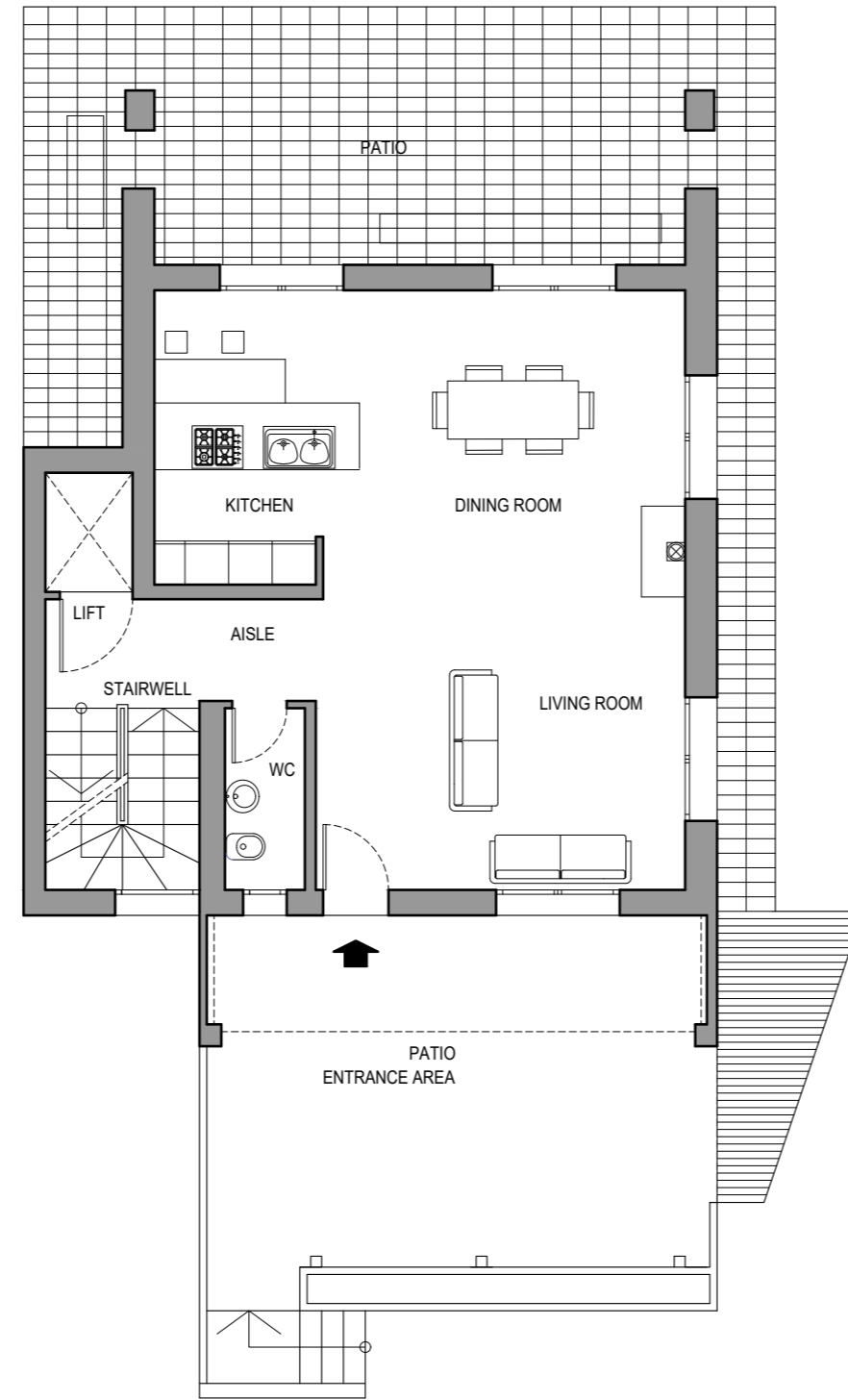
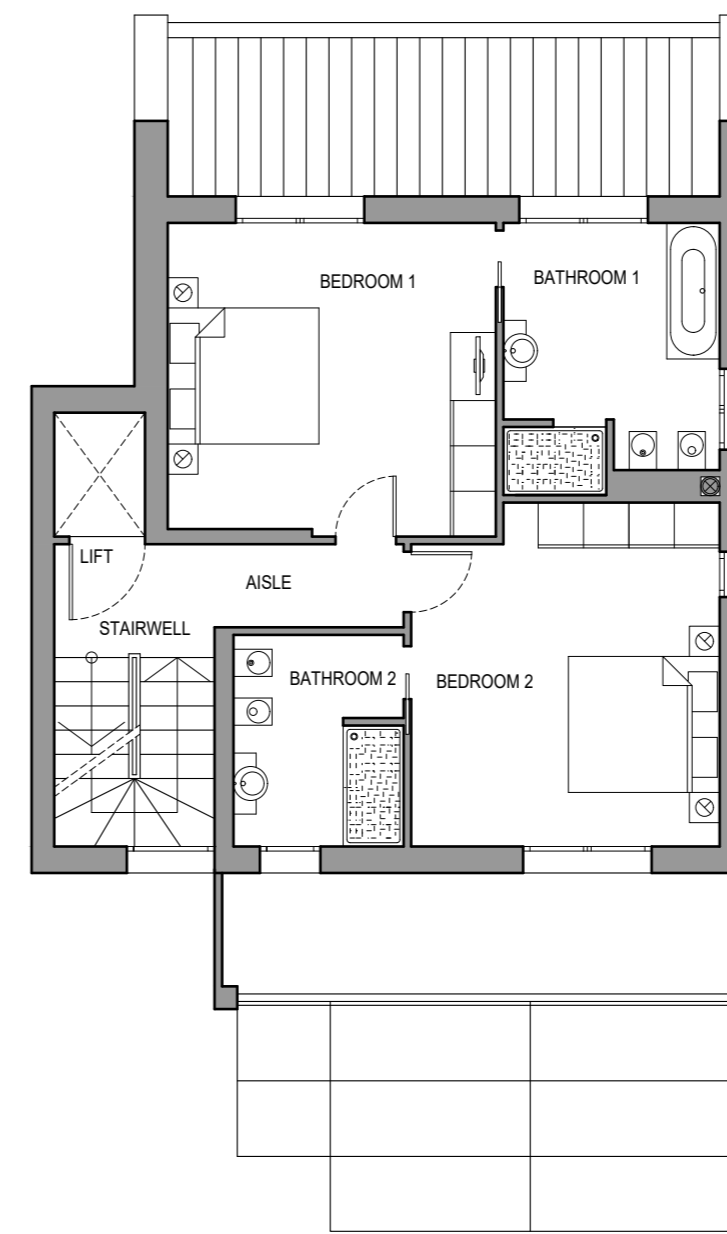


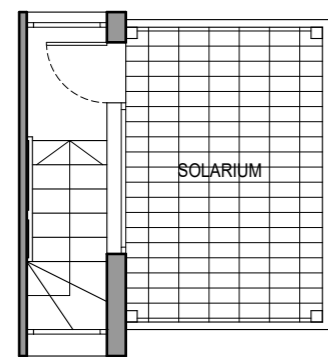
BASEMENT



GROUND FLOOR



FIRST FLOOR



SOLARIUM

STEPPABLE SURFACE TABLE

FLOOR	DESCRIPTION	SURFACE ROOM (M ²)
BASEMENT	GARAGE	38.04
	AISLE	9.82
	BEDROOM	15.54
	BATHROOM	3.27
	WINTER GARDEN	5.59
	LAUNDRY	2.93
	LIFT	1.96
	CLOSET	4.08
	STAIRWELL	5.26
GROUND FLOOR	PATIO ENTRANCE AREA	36.47
	LIVING ROOM	20.32
	DINING ROOM	21.16
	KITCHEN	9.33
	PATIO	17.52
	AISLE	5.20
	WC	2.75
FIRST FLOOR	BEDROOM 1	17.82
	BATHROOM 1	9.66
	BEDROOM 2	17.89
	BATHROOM 2	6.30
	AISLE	5.93
	TERRACE	10.97
SOLARIUM	AISLE	1.59
	SOLARIUM	10.14

COMMERCIAL SURFACE

BASEMENT COMMERCIAL AREA
 house = M² 49.61 (= 99.23 x 50%)
 winter garden = M² 1.99 (= M² 6.64 x 30%)
 TOTAL = M² 51.06

GROUND FLOOR COMMERCIAL AREA
 house = M² 81.96
 outdoor areas (patio entrance area + patio + pavements)
 = M² 27.88 (= M² 92.95 x 30%)
 TOTAL = M² 109.84

FIRST FLOOR COMMERCIAL AREA
 house = M² 81.96
 terrace = M² 3.82 (= M² 12.75 x 30%)
 TOTAL = M² 85.78

SOLARIUM COMMERCIAL AREA
 house = M² 0.63 (2.11 X 30%)
 solarium = M² 3.32 (= M² 11.07 x 30%)
 TOTAL = M² 3.95

GARDEN
 garden = M² 634 (exclusive use)